

MATTHEW JAMES

Residential Sales • Lettings • Management



Eversholt Street, Euston, NW1 1BL

Asking Price £429,950

A two bedroom conversion arranged over the ground and lower ground floor of a Victorian house with sole use of the rear garden. The property requires refurbishment throughout and is being sold with the benefit of being chain free and with a new 250 year lease. Located centrally and close to London Euston and St Pancras International Stations, whilst to the west and within walking distance are the wide open green spaces of Regents Park, Camden Town with its famous bustling market is a short walk north and well located for access to both Central and the West End of London with it's array of attractions.

Ground Floor Entrance

Hallway

Living Room



Sash window and wood flooring.

Kitchen



Range of wall and base units in wood effect finish with dark rolled top work surfaces. (No appliances fitted).

Half Landing

Door to rear garden.

Lower Ground

Bedroom One



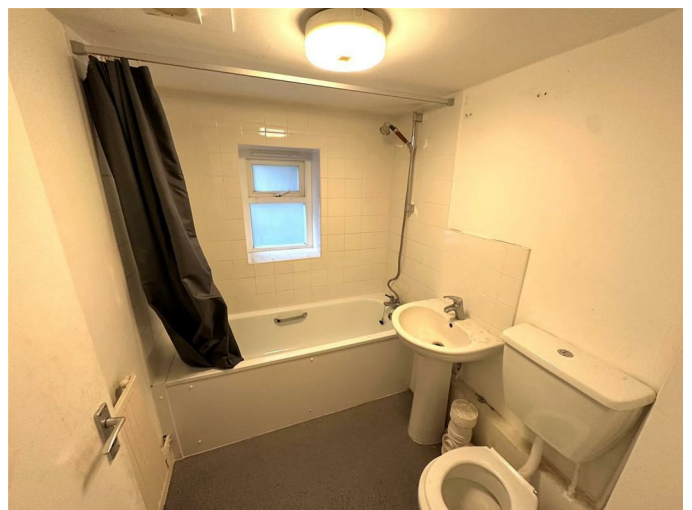
Sash window, wood flooring.

Bedroom Two



Sash window, wood flooring.

Bathroom / W.C.



White suite comprising of a panel enclosed bath with wall mounted shower attachment, pedestal wash hand basin and w.c.

Rear Garden



Currently undeveloped.

[Additional Information](#)

Leasehold - New 250 Year Lease

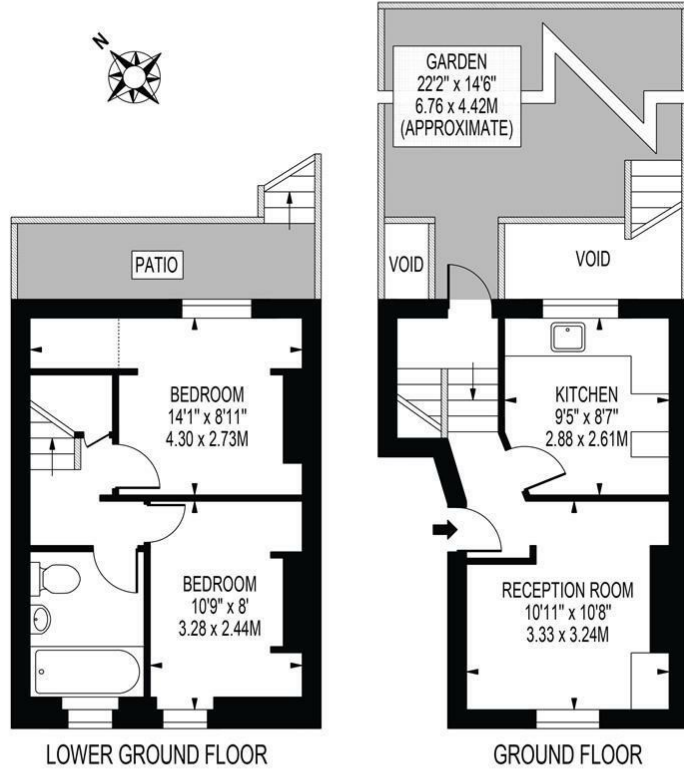
Service Charges To Be Confirmed

Ground Rent - 0

Camden Council Tax Band D

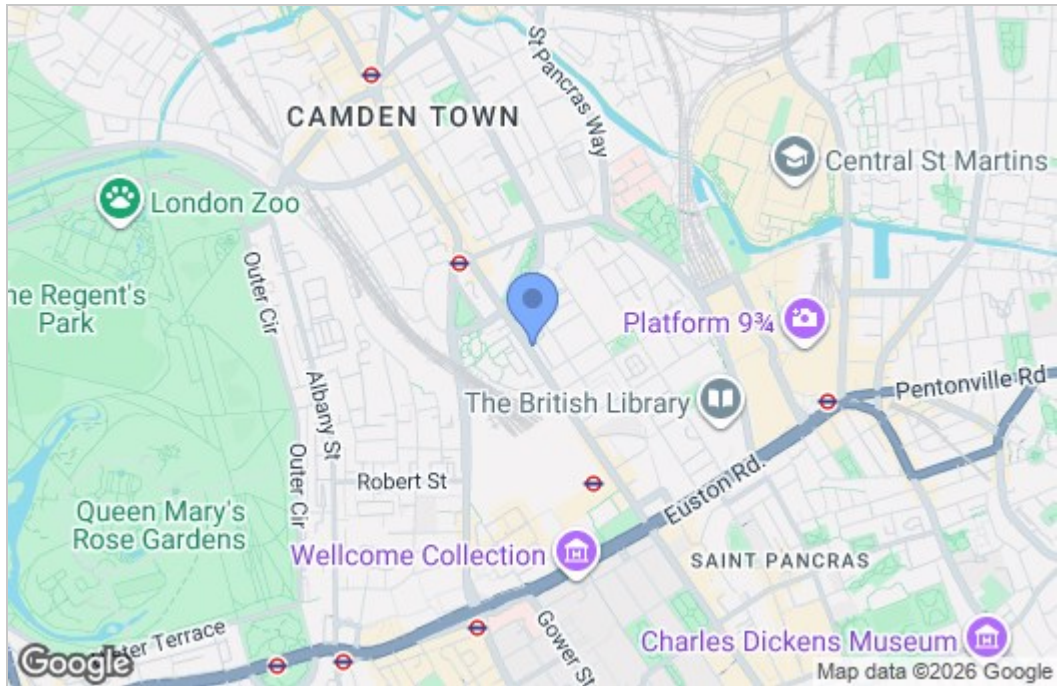
Floor Plan

EVERSHOLT STREET
 APPROXIMATE TOTAL INTERNAL FLOOR AREA: 520 SQ FT - 48.32 SQ M
 (INCLUDING RESTRICTED HEIGHT AREA)
 APPROXIMATE GROSS INTERNAL AREA OF RESTRICTED HEIGHT: 12 SQ FT - 1.12 SQ M

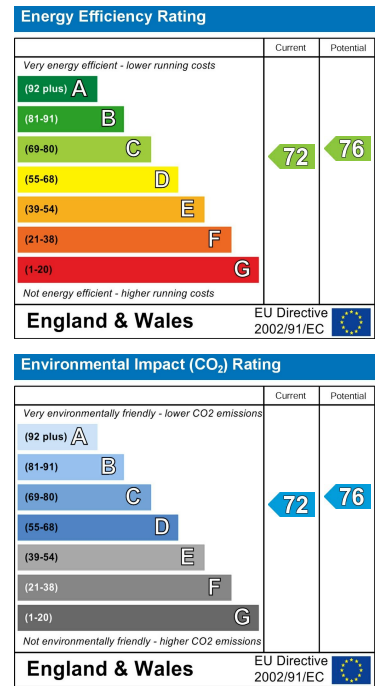


FOR ILLUSTRATION PURPOSES ONLY
 THIS FLOOR PLAN SHOULD BE USED AS A GENERAL OUTLINE FOR GUIDANCE ONLY AND DOES NOT CONSTITUTE IN WHOLE OR IN PART AN OFFER OR CONTRACT.
 ANY INTENDING PURCHASER OR LESSEE SHOULD SATISFY THEMSELVES BY INSPECTION, SEARCHES, ENQUIRIES AND FULL SURVEY AS TO THE CORRECTNESS OF EACH STATEMENT.
 ANY AREAS, MEASUREMENTS OR DISTANCES QUOTED ARE APPROXIMATE AND SHOULD NOT BE USED TO VALUE A PROPERTY OR BE THE BASIS OF ANY SALE OR LET.

Area Map



Energy Efficiency Graph



These particulars, whilst believed to be accurate are set out as a general outline only for guidance and do not constitute any part of an offer or contract. Intending purchasers should not rely on them as statements of representation of fact, but must satisfy themselves by inspection or otherwise as to their accuracy. No person in this firm's employment has the authority to make or give any representation or warranty in respect of the property.